



**CENTRO  
BIO-MEDICO  
DI ANALISI  
CLINICHE**

del Dott. Marco Papagni & C. s.a.s.

## **CHECK-UP DI BASE**

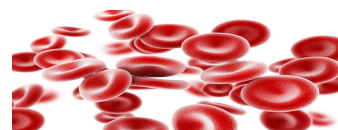
**€ 29,00**

### **ESAME**

### **CONTROLLO**

Emocromo  
Sideremia

ANEMIA



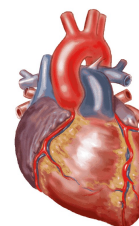
Glicemia

DIABETE



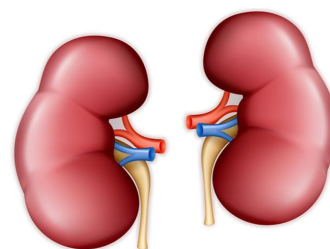
Colesterolo totale  
Colesterolo HDL  
Trigliceridi

FUNZIONALITA'  
CARDIO-VASCOLARE



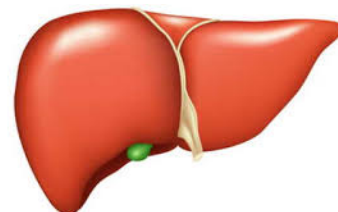
Azotemia  
Creatinina  
Esame chimico-fisico  
delle urine

FUNZIONALITA'  
RENALE



Transaminasi GOT  
Transaminasi GPT

FUNZIONALITA'  
EPATICA



**NO PRENOTAZIONE**

Per info rivolgersi in segreteria

**76125 Trani (BT) – Via De Cuneo, 54 Tel. 0883-588960 Fax 0883-588713**

**[www.analisipapagni.it](http://www.analisipapagni.it)**